

## SOCIOL 103: SOCIAL POLICY, SOCIAL JUSTICE IN-CLASS TEST INFORMATION

**When?** 9am, Fri 11 April 2008

**Where?** Lib B10

**Worth?** 20% of final grade

**How long?** The test will last for 45 minutes. You will not be allowed to leave in the last 5 minutes to avoid disturbing other students.

**What do I need to study?** Lecture material, tutorial discussions and set readings covered up until 4 April. The test aims to assess the breadth of your knowledge and allow you to demonstrate that you have attended lectures and critically engaged with the set readings through individual study and tutorial discussions.

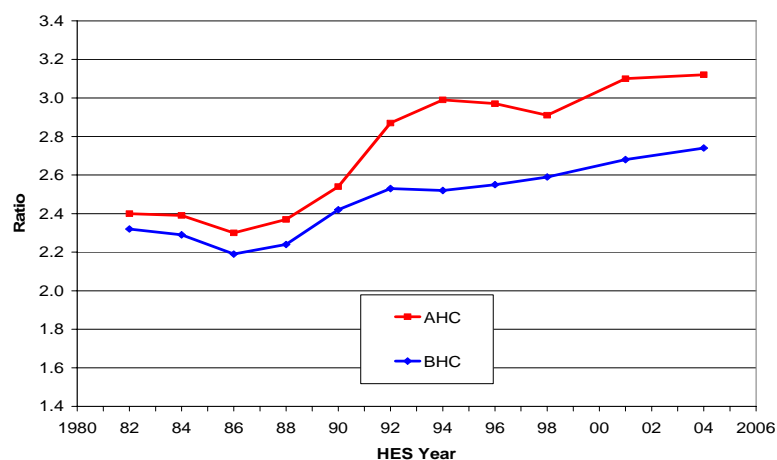
The test will consist of two parts:

1. 5 short-answer questions worth 1 mark each. These aim to test your understanding of key definitions and concepts. You had time to brainstorm which concepts and definitions are likely to be in the test in tutorials last week. It is expected you will write *1-2 sentences* to answer each question. Spend around 10 minutes on this section.

**and**

2. One 'data analysis' question worth 15 marks where you will be asked to use the table below as the basis for a short essay. You learned generally what kind of discussion is expected in this week's tutorial but it is now up to you to prepare your own answer based on this graph. You are expected to not only *describe* what is in the table but to draw upon all of the knowledge you have gained from lectures, tutorials and readings to *explain the trends* that it demonstrates and *the views that different theoretical perspectives* might have of this problem. It is expected you will write between *2-4 pages* to answer this question. Spend around 35 minutes on this section.

### Income inequality in New Zealand: the P80/P20 ratio



Sourced from Perry (2007:42)